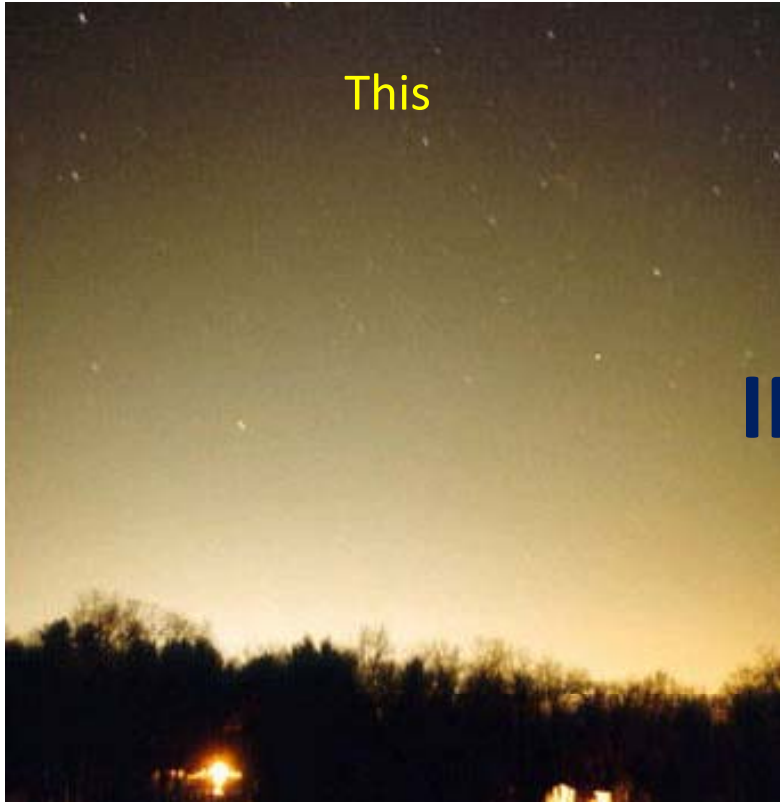


Bring Back the Dark

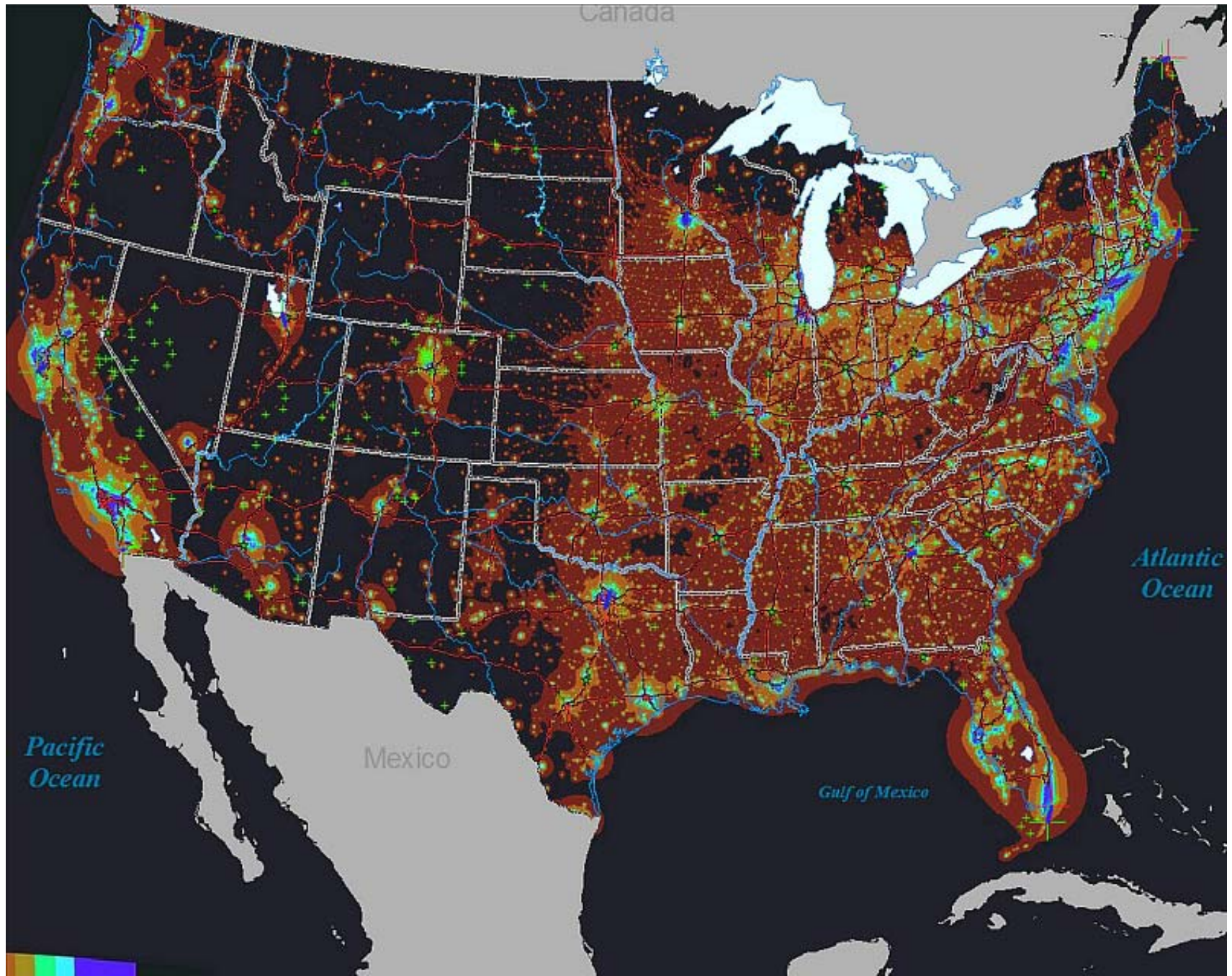
By Mike Hotka

You Have the Power to Change



INTO





Dos and Don'ts



Old vs New



Old and New







Malcolm Smith



Instead of...



Responsible Solution



Energy and cost savings



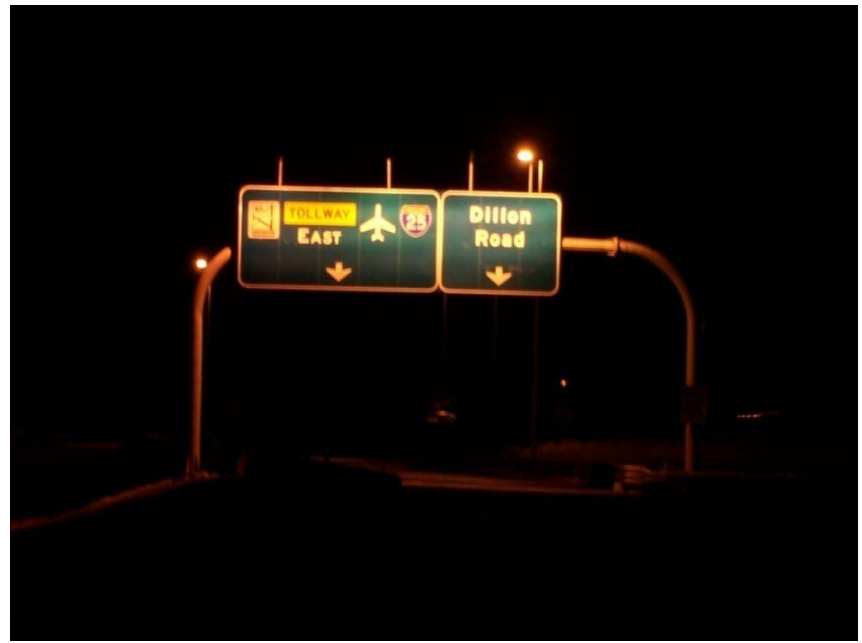
A floodlight run amok!



But we need Public Safety?



Road Signs



Light Trespass



And Night Time Glare





The Culprit?



shown with
optional
generator

Thought of This One?





More Light Deters Crime



The glare from an unshielded light creates deep shadows.



The glare from the light hid a possible attacker.

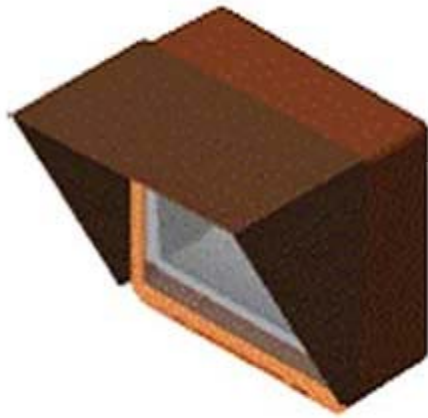
Cities have Ordinances

43	Action Step ES-C.5.2: Prepare and consider photometric (light intensity) standards that reduce outdoor nighttime light pollution.	Ongoing. All non-residential site plans are required to submit a photometrics plan. Planning staff implements a non-codified policy for no light spill from any new development by requesting that light reach a level of .01 lumens at the property line (essentially no light overflow). Full-cutoff, down cast lighting is required on all new projects. CIP projects utilize photometric studies to assure sufficient light is provided at safe levels.
----	---	--

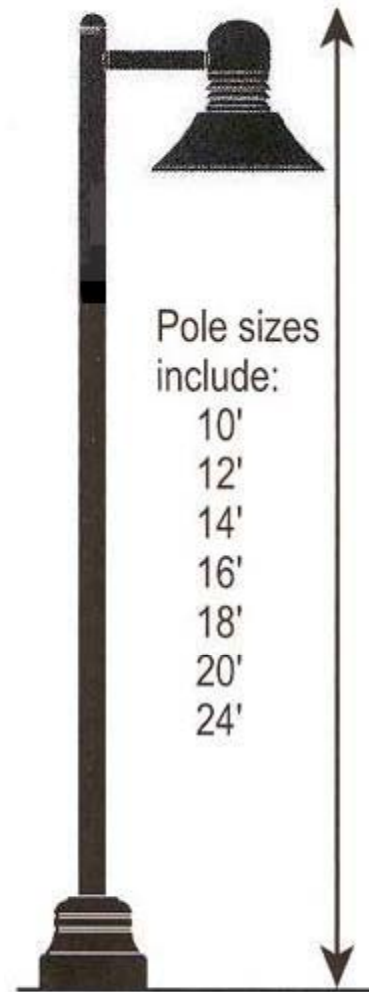
Conclusion



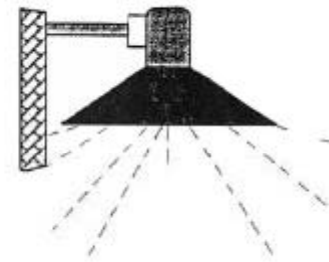
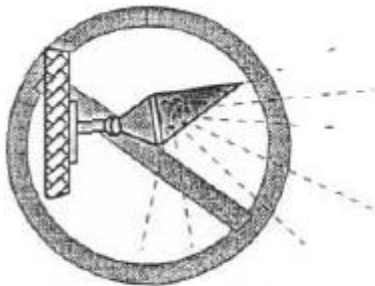
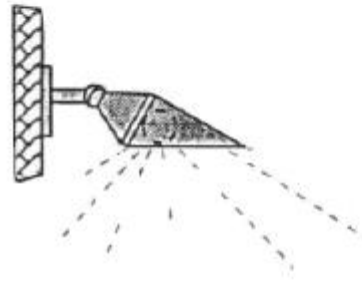
It is up to each of us
to be Responsible



Be aware of where the light goes



Plan Your Remodeling Upgrades and Choose Responsibly



Fixture illustrations by Peter Talmage

Keep This from Getting Worse

